

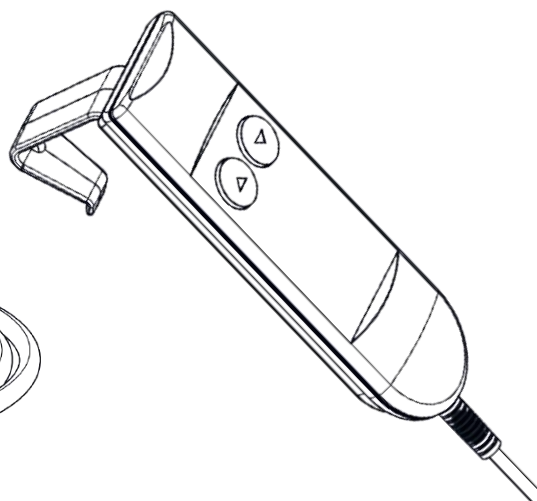
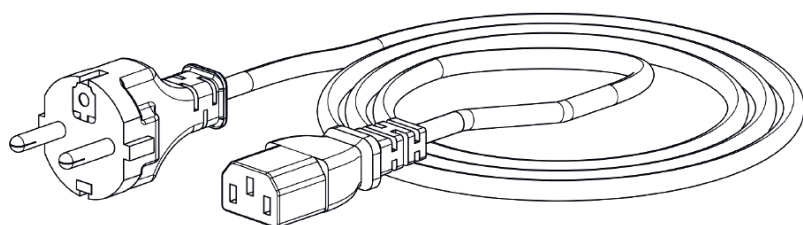
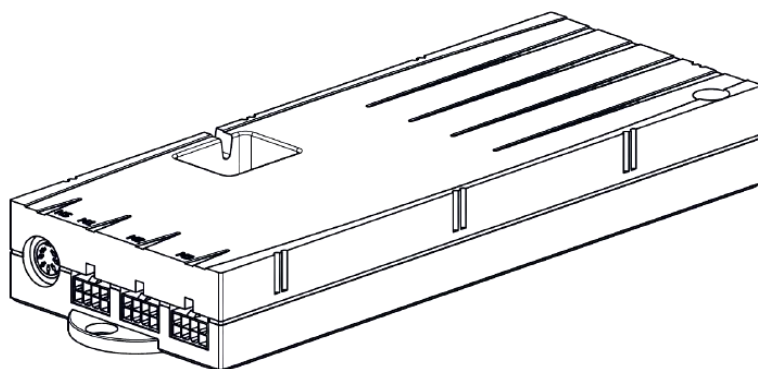
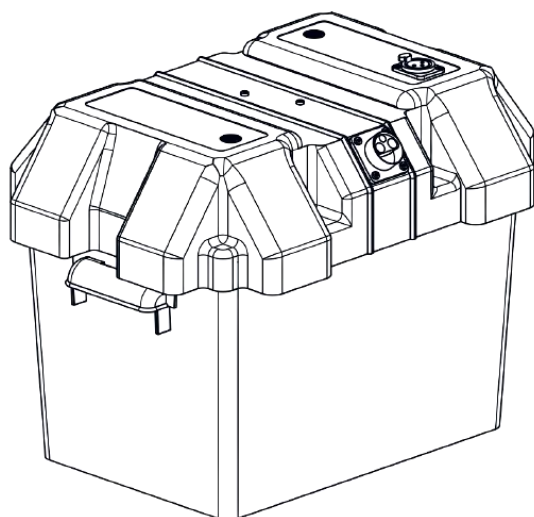


X2 TECHNOLOGY

A Phoenix Mecano Brand

Product range catalogue

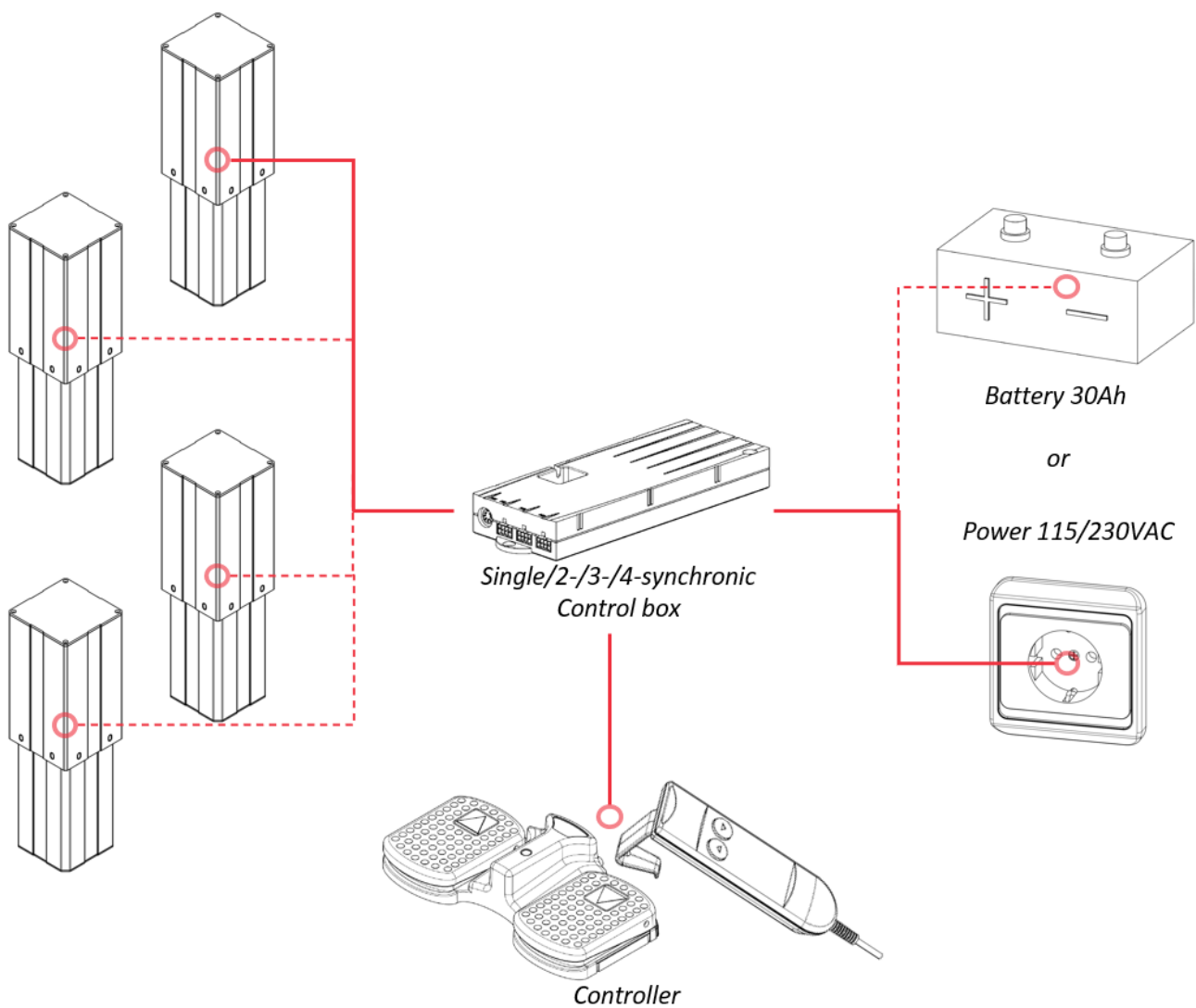
Accessories



LIFTING SYSTEMS	2
RANGE OF ACCESSORIES	3
CONTROL BOXES	4
T-model	5
B-model	6
LP-model	7
Compact-3-model	8
BATTERY PACKAGE	9
CONTROLLERS	10
CABLES	11
SERVICE KIT	12

Lifting systems

At X2 Technology we do not only create robust and reliable lifting columns, but also complete customized systems for each application. The figure shows how different elements in the systems are connected.



Range of accessories

X2 Technology offers a broad range of accessories for easy and safe usage. The accessories can be combined in multiple ways to make the most suitable package for the application of the lifting column.

Control boxes

The control box can be described as the computer of the lifting equipment. It connects the controllers to the lifting column and tells the column when to start moving and when to stop. It also enables parallel columns to move as one synchronized unit. High performance, powerful, reliable and easy to use are key factors for X2 technology's control boxes.

(p.4)



Battery package

A battery package is useful in applications when the final product needs to be movable. The package includes a 30 Ah battery and a robust case for protection.

(p.9)



Controllers

There are several kinds of controllers to control the column. Our range includes foot/hand controls, controls with/without memory positions and remote controls.

(p.10)



Cables

A large selection of cables is offered to fit the variety of control boxes, battery packages and controls.

(p.11)

Service kit

If the column is exposed to dangerous chemicals or a dusty environment it needs to be cleaned to maintain the durability. A service kit is offered with approved liquids.

(p.12)



Control Boxes

The selection of energy efficient control boxes works seamless with our lifting columns. The chart below shows an overview of the most common ones and their area of application. Customized drives can also be provided.

Single drives

2-Synchronic Drives

3-Synchronic Drives

4-Synchronic Drives

24V
>10A
(per column)

T19-241-001
(singel)
Max 15A (per column)



T27-339-002
(2-synchronic)
Max 15A (per column)



T39-337-003
(3-synchronic)
Max 15A (per column)



T39-337-004
(4-synchronic)
Max 15A (per column)



230V/
110V
<10A
(per column)

Compact-3
(singel)
Max 8A (per column)



Compact-3
(2-synchronic)
Max 8A (per column)



Compact-3
(3-synchronic)
Max 5A (per column)



Dual Compact-3
(4-synchronic)
w/ link cable
Max 8A (per column)



LP7-241-001
(singel) (230V only)
Max 15A (per column)



LP7-339-002
(2-synchronic) (230V only)
Max 15A (per column)



B3-337-003
(3-synchronic)
Max 15A (per column)



B3-337-004
(4-synchronic)
Max 15A (per column)



230V/
110V
>10A
(per column)

Compact-3
w/ split cable
(singel)
Max 16A (per column)



Dual Compact-3
w/ split cable & link cable
(2-synchronic)
Max 16A (per column)



Tripple Compact-3
w/ split cable & link cable
(3-synchronic)
Max 16A (per column)



Quadruple Compact-3
w/ split cable & link cable
(4-synchronic)
Max 16A (per column)



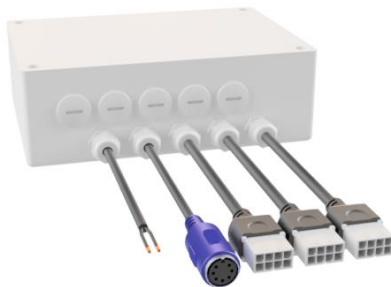
Control boxes - T-models



Single Drive



2-Synchronous Drive



3-Synchronous Drive



4-Synchronous Drive

Features

- Soft start/stop
- Temperature/Time limit switch
- Current limit
- Electronic end stop

	Single Drive	2-Synchronous Drive	3-Synchronous Drive	4-Synchronic Drive
Product name	T19-241-001	T27-339-002	T39-337-003	T39-337-004
Max current (per motor exit)	15A			
Supply voltage	24 Vdc			
Operating temp	0 to 60°C			
Housing size	130x80x30 mm	130x130x60 mm	180x130x60 mm	
Cable length	1 m			
IP Class	IP 65			

***For more information, see Control Box datasheet [here](#)*

Control boxes - B-models

Features

- Soft start/stop
- Current limit
- Temperature/Time limit switch
- Electronic end stop



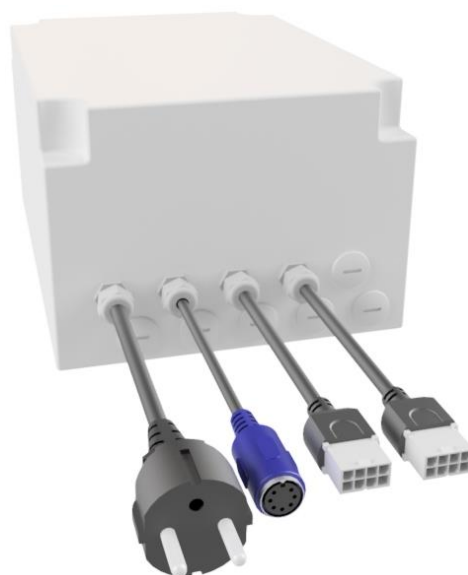
	3-Synchronic Drive	4-Synchronic Drive
Product name	B3-337-003	B3-337-004
Max current (per motor exit)	15 A	
Supply power	115/230 VAC	
Operating temp	0 to 60°C	
Housing size	368x192x130 mm	
IP Class	IP20	

***For more information, see Control Box datasheet [here](#)*

Control boxes - LP-models

Features

- Soft start/stop
- Current limit
- Temperature/Time limit switch
- Electronic end stop



	Single Drive	2-Synchronic Drive
Product name	LP7-241-001	LP7-339-002
Max current (per motor exit)	15 A	
Supply power	230 VAC	
Operating temp	0 to 60°C	
Housing size	255x180x126 mm	
Cable length	1 m	
IP Class	IP65	

***For more information, see Control Box datasheet [here](#)*

Control boxes – Compact-3-model

Compact-3 is a highly configurable control box that can be parallel linked and programmed to control one to four columns with 5, 8 or 16A.



Features

- Soft start/stop
 - Temperature/time limit switch
 - Current limit
 - Electronic end stop
-

Single, 2-,3- & 4-Synchronic Drive

Product name	EU: COMPACT-e-3-EU US: COMPACT-e-3-US
Max current (per motor exit)	8 A
Supply voltage	115/230 VAC
Operating temp	0 to 30°C
Housing size	264x103x37 mm
Weight	598 g
Standards	EU: EN60335, EN1000 US: UL 60950 Australia: IEC 60335
IP Class	IP 20

***For more information, see Control Box datasheet here*

Battery package

The battery package consists of a protection case and a battery. Chargers and power supply cables are offered for a complete package.

Battery Box

Product name	25626-24-30-1
Capacity	30 Ah
Voltage	24 V
Fuse	30 A
Dimensions	370x270x270 mm
Weight	17 kg



Battery Charger

Product name	PB-120P-27C
Voltage	27,6 VDC
Dimensions	183x97x49 mm



***For more information, see Battery Pack datasheet [here](#)*

Controllers

HSX

Controller with two buttons. Compatible with X2's range of control boxes. Easy to mount.

HSU

Controller with display and four memory buttons. Compatible with control box Compact-3. Easy to mount.



RF Remote

Remote controller with two buttons and receiver which is compatible with X2's range of control boxes.



Proline

Hand controller with two buttons and hook. Compatible with X2's range of control boxes.

Foot switch

Foot controller with two pedals and a non-slip-surface. Compatible with X2's range of control boxes.



***For more information, see Controller's datasheet here*

Cables

Extension cable - Controls

ACS-CBL-HS, 1 m.

Extension cable - Motor 6/8-pin

LOG-CBL-MOT-KTT-BASIC, 1,1 m.

3122.53-02, 1,75 m.

Extension cable - Motor 8/8-pin

LOG-CBL-MOT-ELS2-1.2, 1,2 m.

TEC-2022-012, 2 m.

TEC-2022-005, 4 m.

TEC-2022-029, 6 m.



Linking cable

Multipoint cable for linking Compact-3-boxes.

LOG-CBL-HT-SYNC-1500, 1,5 m.

Linking cable

LOG-CBL-HT-SYNC-500, 0,5 m.

Power cables

For AC control boxes and battery charger, 1 m.

LOG-CBL-PWK, EU.

LOG-CBL-PWK-US-SJT, US.



Sensor cable

LOG-CBL-HT-CB-SENS, for connecting sensor to Compact-3, 0,5 m.

Programming cable

ACS-CB-USBPROG, for programming Compact-3.

Split cable

LOG-CBL-HSY, control, 0,2 m.

0500-024-1, for connecting multiple Compact-3 with column.



***For more information, see Cable's datasheet here*

Service kit

We recommend the surface of the tubes to be cleaned and relubricated every six months. This will enhance run and lifespan of the columns. The components of the service kit are carefully chosen to fit the aluminium surface of the lifting column.

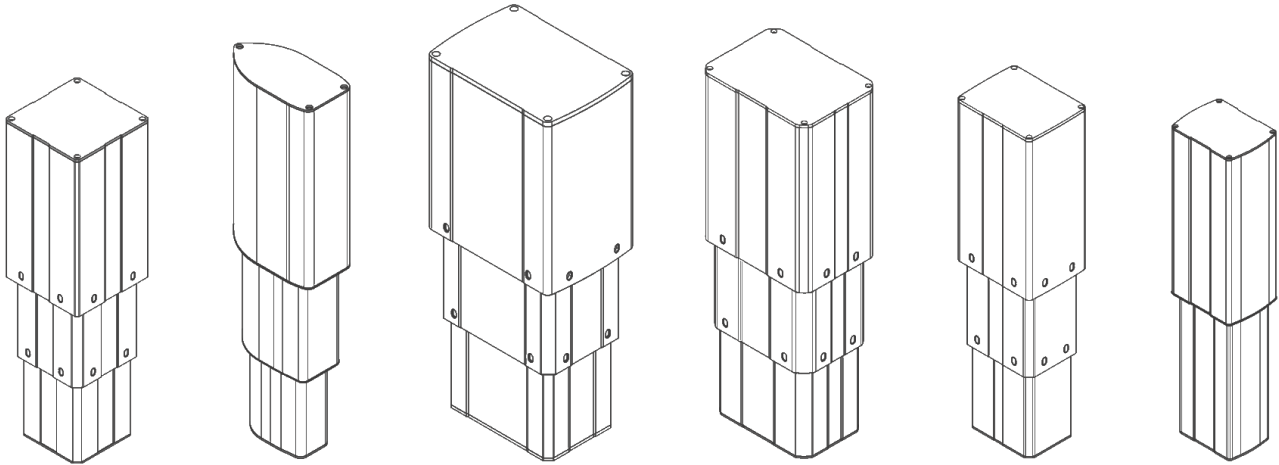
Including components:

- Cleaning liquid
- Lubricant oil
- Blue cloth (for cleaner)
- White cloth (for lubricant)



***For more information, see Service kit datasheet [here](#)*

X2 Technology – The Customizer



About us

X2 Technology is a Phoenix Mecano brand marketed by Phoenix Mecano AB. X2 Technology manufactures top range lifting columns to the medical, ergonomic and industrial market. Our biggest strength lays in our exceptional experience of guided aluminum profiles. The experience enables us to develop and design innovative products in close cooperation with our customers to meet individual requirements. With our flexible manufacturing techniques, we can produce both small and big quantities of customized products.

Before use of products, see general terms & conditions and operating manuals. Lifetime and suitability are depending on application and must therefore be tested by each user. Specifications subject to change without prior notice. All components in this datasheet are property of X2 Technology and may therefore not be used without permission.

Copyright © X2 Technology 2021.06.

Phoenix Mecano AB



+46 470 717950



info@x2technology.se



www.x2technology.se



Made in Sweden



X2 TECHNOLOGY

A Phoenix Mecano Brand