

Lifting column D-type

Features:

- Extremely stable
- Great offset load
- Short retracted height
- Long life span
- Low noise level

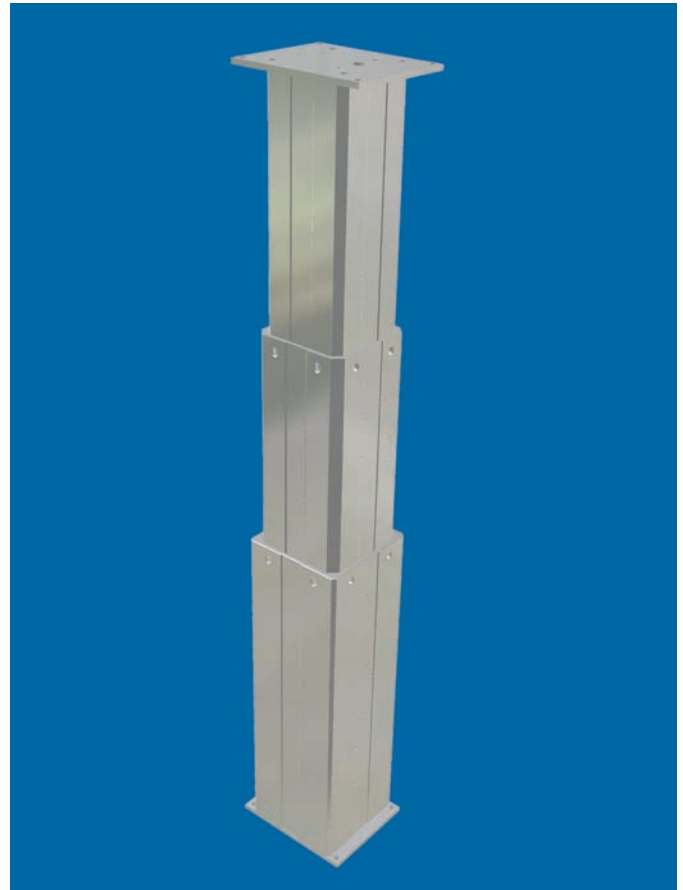
Options:

- Safety nut
- Potentiometer or encoder
- Customise

Description:

Lifting column D-type is designed for medical, ergonomical and industrial application where a short retracted height compared to stroke length is requested. D-type is built on X2's extremely stiff aluminium tubes and long life pads, combined with a very tight tolerance assembly - where others squeeze - we fit. The columns perform a stable, reliable and maintenance free guiding system without any play.

D-type is available in push or pull version. As an option you can get D-type with potentiometer or encoder for positioning or parallel run of 2 or more columns. If you don't find a column in below standard range we can customise for you.

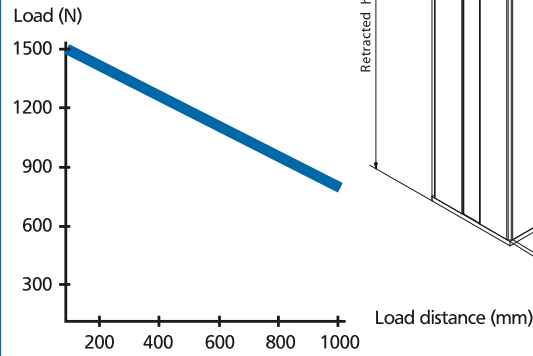


| Technical data (unit) | D-C13 | D-M13 | D-N13 |
|-------------------------------|---------|---------|---------|
| Force*, push or pull max (N) | 1500 | 3000 | 6000 |
| Speed, 0 to max load (mm/s) | 80-50 | 35-20 | 15-10 |
| Stroke (mm) | 300-700 | 300-700 | 300-700 |
| Retracted height (mm) | 320-520 | 320-520 | 320-520 |
| Voltage (VDC) | 24 | 24 | 24 |
| Current, 0 to max load (A) | 10 | 10 | 10 |
| Duty cycle, min on/off (Int.) | 1 / 9 | 1 / 9 | 1 / 9 |
| Ambient temperature (+°C) | 10 / 40 | 10 / 40 | 10 / 40 |
| Degree of protection (IP) | 30 | 30 | 30 |

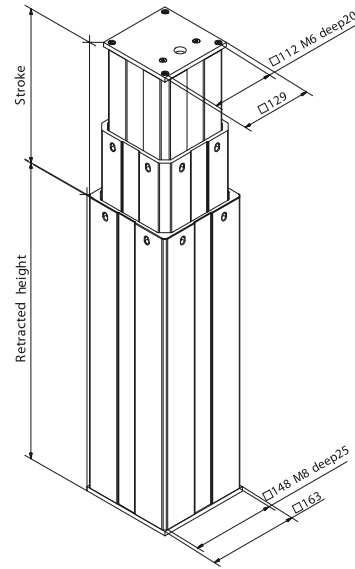
*See offset load diagram on next page



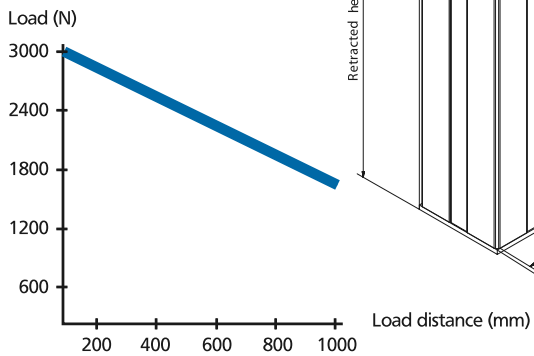
D-C13



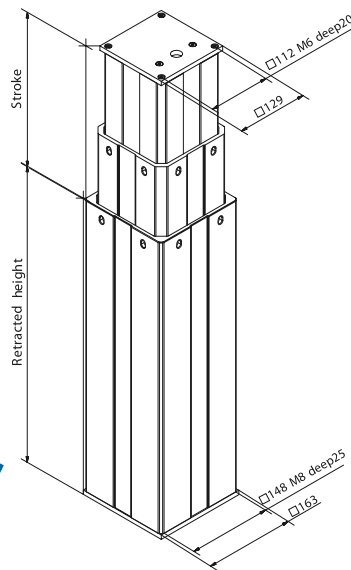
Offset load diagram



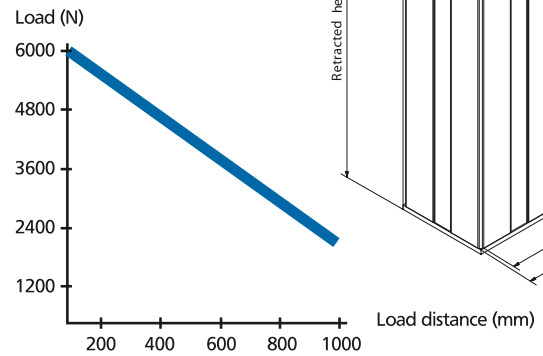
D-M13



Offset load diagram



D-B13



Offset load diagram

