

Lifting column DF

Features:

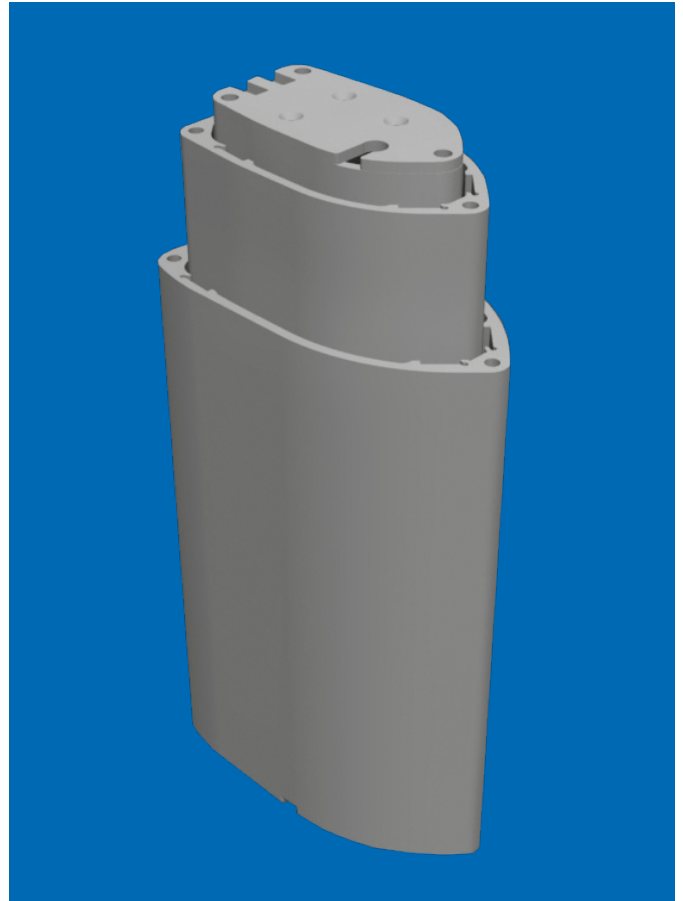
Short retracted length
Safety factor >2,5
Limit switches

Options:

Encoder
Customized

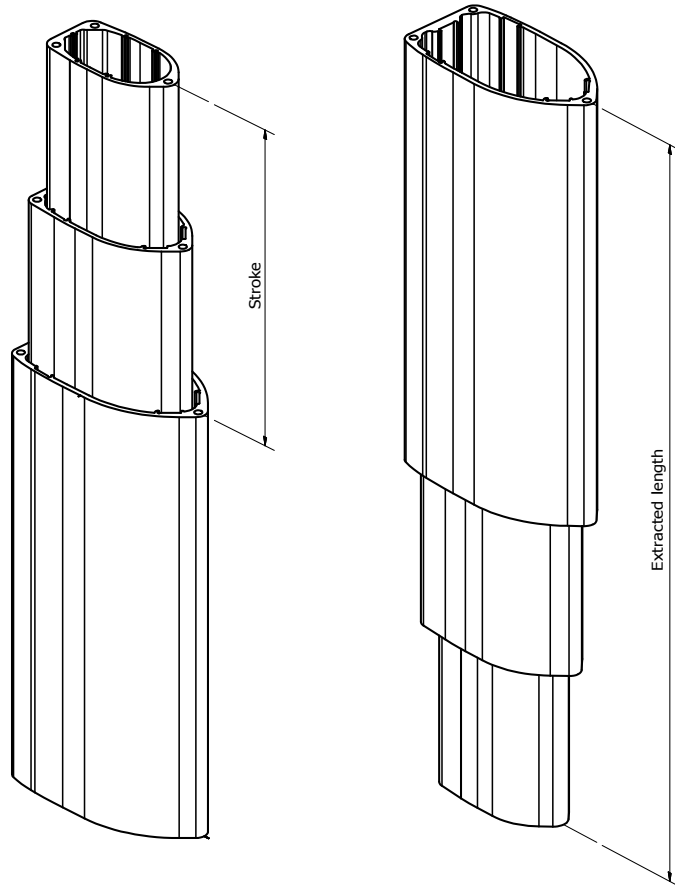
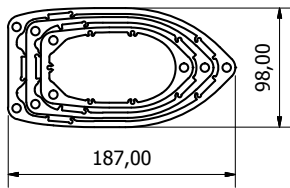
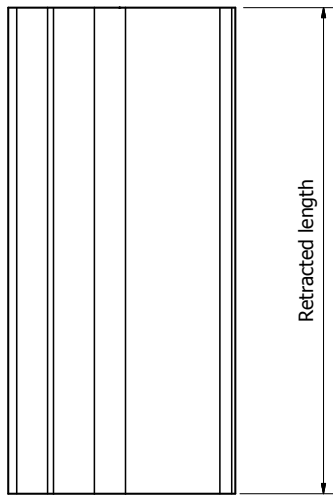
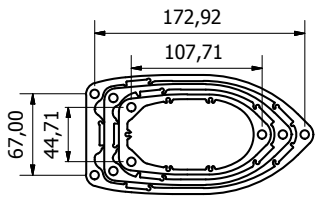
Description:

Lifting column DF is designed for medical, ergonomic and industrial application. DF is built on aluminium tubes and long life pads. The columns perform a reliable and maintenance free guiding system. DF is available in push. As an option you can get DF with encoder for positioning or parallel run of 2 columns. If you don't find a column in above standard range we can customize for you.



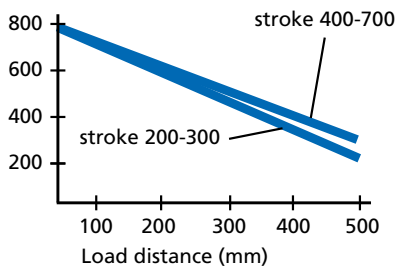
Technical data	DF-VD	DF-VE
Force* (push) max	800 N	1000N
Speed, 0-max load; mm/s	40-30	25-18
Stroke	From 200 mm up to 600 mm	
Retracted length, 3-section	Stroke * 0,5 + min 190 mm	
Voltage	24VDC	
Current, 0 to max load	2-6A depending on load	
Duty cycle, on / off	1min on / 9 min off	
Ambient temperature	+10 / +40 °C	
Degree of protection	IP30	

* See offset load diagram on next page

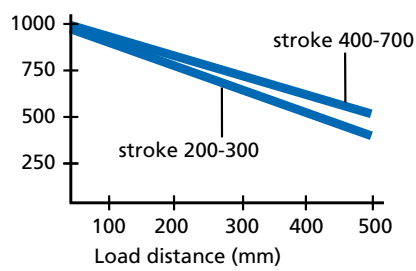


Offset load diagram 3-sections column (load placed along long side of tubes)

Load (N)



Load (N)



technology

X2 Technology AB | Uttervägen 6 | S-352 45 Växjö | Sweden | Tel: +46 470 717950
Fax: +46 470 717951 | info@X2technology.se | www.X2technology.se

Information regarding installation is available in the operation manual. Lifetime and suitability are depending on application and must therefore be tested by each user. Specifications subject to change without prior notice. Copyright X2 Technology 1111